



Company Profile

Priming your future.



A white wireframe architectural drawing of a building is positioned on the left side of the page, extending from the top left towards the bottom right. The drawing shows the structural elements of a multi-story building, including beams, columns, and floor slabs, creating a complex geometric pattern.

RINA Prime Value Services supports its clients in the transition towards an envolved and sustainable future.

Thanks to constant research in **technological innovation** and **digitalization**, a rich and **distinctive information heritage** and a **strong commitment to sustainability**, RINA Prime Value Services assists operators in both the public and private sectors. Our services are designed to protect and enhance the value of real estate capital at every stage of investment: from assessment to feasibility and design, from construction to management, up to enhancement and disposal.

RINA worldwide



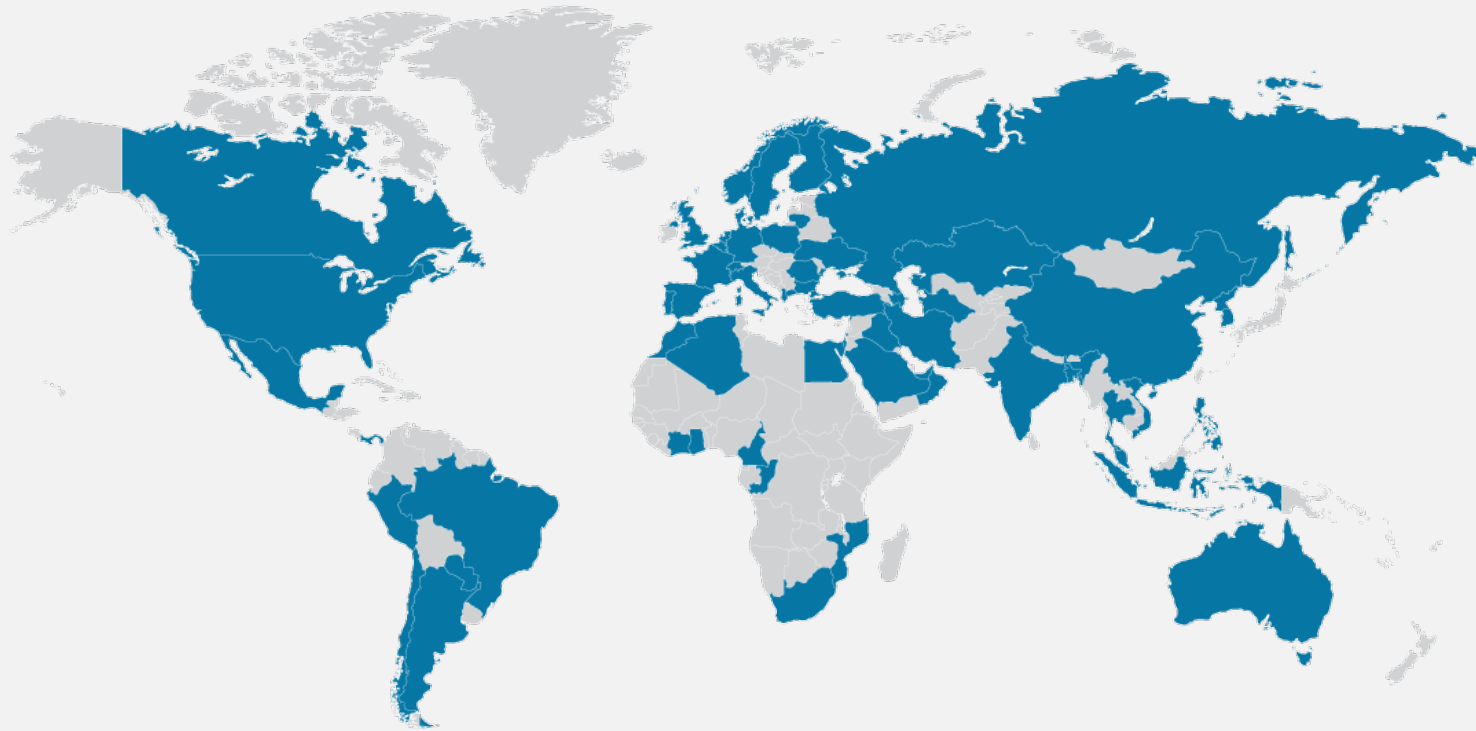
5,800
colleagues



200
offices



70
countries



RINA Business areas

RINA Prime Value Services is RINA's legal entity in the Real Estate sector.



Real Estate

Innovative value proposition of integrated services: RINA Prime Value Services is able to cover all the real estate lifecycle



Energy

Energy solutions from O&G to renewables, taking care of sustainability and environmental impacts



Marine

Rules, technologies and innovative services to manage transport and pleasure vessels



Certification

Solutions to support products, people and processes on their way to excellence



Infrastructure & Mobility

The path to the next generation of infrastructure and buildings by ensuring their safety and efficiency



Industry

Accelerating clients' success with technology-driven strategies and solutions

Our pillars

Our commitment to an evolved more sustainable future



SUSTAINABILITY

We help clients reach their goals according to ESG standards, through a panel of integrated services that allow them, from the beginning and throughout the entire process chain, to undertake a clear and structured pathway to sustainability, strongly rooted in the regulatory framework.



**SCAN THE QR CODE TO VIEW
THE SUSTAINABILITY
REPORT 2023**



DIGITALISATION

Our business model adopts state of the art, technologically advanced solutions and our expertise in the field of PropTech allows us to automate and optimise real estate asset management.

We employ a full-fledged technological innovation Hub, the Digital Innovation Centre, able to intercept and promote digitalisation projects across the broad spectrum of real estate services, from valuation to property management.

**digital
innovation
center**

Our Value Proposition



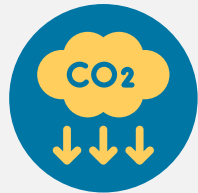
STRATEGIC PLANS FOR THE DEVELOPMENT OF BROWNFIELD ASSETS

Develop a long-term vision for strategic infrastructure and real estate, identifying opportunities for growth, development and optimization.



RENEWABLE ENERGIES TOWARDS ENVIRONMENTAL TRANSITION

Support the use of renewable energy sources, reducing the carbon footprint and promoting a sustainable ecological transition.



DECARBONIZATION MIXED WITH ASSET INTEGRITY ADVISORY

Integrating asset enhancement and evaluation with the decarbonization process, enabling a synergistic approach to maximize their value.



EPC CONTRACTOR IN NEW DEVELOPMENT PLANS

Support and management along the project lifecycle, ensuring time and costs rationalisation



ENERGY EFFICIENCY, GREEN BUILDING COMPLIANCE, ESG

Align assets with the latest regulations and sustainability criteria, increasing their profitability and positive environmental impact.



PROPERTY ASSETS DIGITALISATION

Monitor and manage assets and real estate more efficiently, enhancing security and maintenance.



DESIGN & SMART ENGINEERING

Develop advanced design solutions, also with respect to energy efficiency and sustainability to ensure facilities correct operation.



ASSET INTEGRITY – BUILDING COMPLIANCE

Ensure asset integrity and compliance by reducing security and regulatory compliance risks.

Asset class



Office

- Offices
- Coworking
- Business center



Hospitality

- Hotel
- Village Open Air Resort
- Residence / Bnb
- Scattered hotel



Industrial

- Logistics
- Data Center
- Last Mile



Retail

- High Street
- Outlet
- Retail Park
- Shopping Center



Living

- Residential Btr
- Residential Btb
- Senior Living
- Student Housing
- RSA
- Social Housing



Renewable energy

- Photovoltaic
- Agro-photovoltaic
- Biogas
- Wind energy
- Hydropower



Special

- University/school
- Museum
- Cinema/multiplex
- Stadium
- Parking garage



Farmland

- Winery
- Livestock
- Vertical Farm



NPE credit

- NPL
- UTP
- In Bonis



Marine

- Ships
- Watercraft
- Maritime transport



Green brownfield

- Plot area
- Development mixed use



Infrastructure

- Train
- Airport
- Port
- Highway

We enhance the efficiency of service delivery processes, through our digital solutions based on artificial intelligence, advanced mathematical calculations, and Big Data Analysis.



Real Estate Management Platform for 360° Asset Management
(IdeaRE)

REFTree



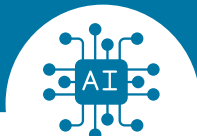
The BIM integration of REFTREE with IoT and blockchain optimizes management and predictive maintenance using smart contracts

Digital Twin & IoT



AI applied through neural networks to customer support service delivery

Avatar



PdM Predictive Maintenance
Digital twin – real estate advisory detection
E-learning – Ateneo.ai

Artificial Intelligence



Integration of the ESG module in the management platform for asset data collection

ESG



Smartphone/tablet
Kiber helmet
Communication (VRMedia)

Remote inspections

Business areas



Valuation

RICS REGULATED
EVALUATORS

NPE EVALUATION

ADVISORY HBU



Technical services

DD, PROFESSIONAL
SERVICES

ENERGY EFFICIENCY,
GREEN BUILDING, ESG

PROJECT MONITORING,
PROJECT MANAGEMENT

ASSET INTEGRITY



RE technologies for Proptech

A.I., DIGITAL TWIN

REFTREE



Property services

PROPERTY
MANAGEMENT

BUILDING
MANAGEMENT

PROJECT
MANAGEMENT

COMMERCIAL
SUPPORT



NPE Services

NPE ADVISORY

CREDIT
MANAGEMENT

AUCTION
FACILITATION & BOV

ASSET
MANAGEMENT

DATA INTELLIGENCE
& QUALITY CONTROL



EPC Contractor

REDEVELOPMENT

ENERGY EFFICIENCY

RENEWABLE ENERGY

DIGITAL SOLUTIONS & ESG FULLY INTEGRATED IN EACH AREA

Track record



VALUATION

- RICS Regulated Valuer
- IVSC-IAS Compliance
- Fair value ai fini bilanciastici
- Loan
- NPL

+4.500
asset

+80.000
Retail appraisals

160
Funds

+25.000
Corporate appraisals

+€30mld
Market value

+4.500
Leasing appraisals



ADVISORY

- Real Estate Advisory
- Portfolio Assessment
- Market Study
- Highest & best use analysis
- Business Plan

+100
RE Advisory

100
Highest & best use analysis

+€2mld
Market value



TECHNICAL SERVICES

- Due Diligence and professional services
- ESG (Gresb, Eu Taxonomy DD)
- Energy Efficiency / Decarbonization (Creem, NZEB..)
- Green Building (Leed, Well, BREEAM..)
- Project Monitoring
- Project & Construction management
- Engineering services
- Asset integrity / Building Compliance

+500.000sqm
Certified real estate

+150
Green building ESG

+2.000
DD, property inspections



RENEWABLE ENERGY

- Design, installation, and maintenance of systems
- Remote operation and technological revamping
- Technical-economic feasibility studies and energy analysis
- Design and supervision of civil and electrical works
- Safety coordination

+40
Development projects

+576MW
of production

+800.000t
CO₂ saved

Track record



PROPERTY

- Property Management
- Project Management
- Building Management
- Commercial Services
- Procurement



+€16mld €

Value of managed real estate assets



+7Mln mq

Managed area



+5.000

Lease agreements



RE TECHNOLOGY

- REFTREE
- Avatar
- Artificial intelligence
- Digital twin & IoT



+1Mill.

Managed real estate units



+39

Web application



+40Mln.

Smq managed



+24

Software utilizing AI



+5.000

Active users on REFTree



2

Industrial patents



NPE

- Data Intelligence & Quality Control
- Auction Facilitation & BOV
- Global Servicer Asset Management
- Credit Management
- Advisory
- Remarketing



+70.000

Monitored real estate



+721.000

Real estate in big data

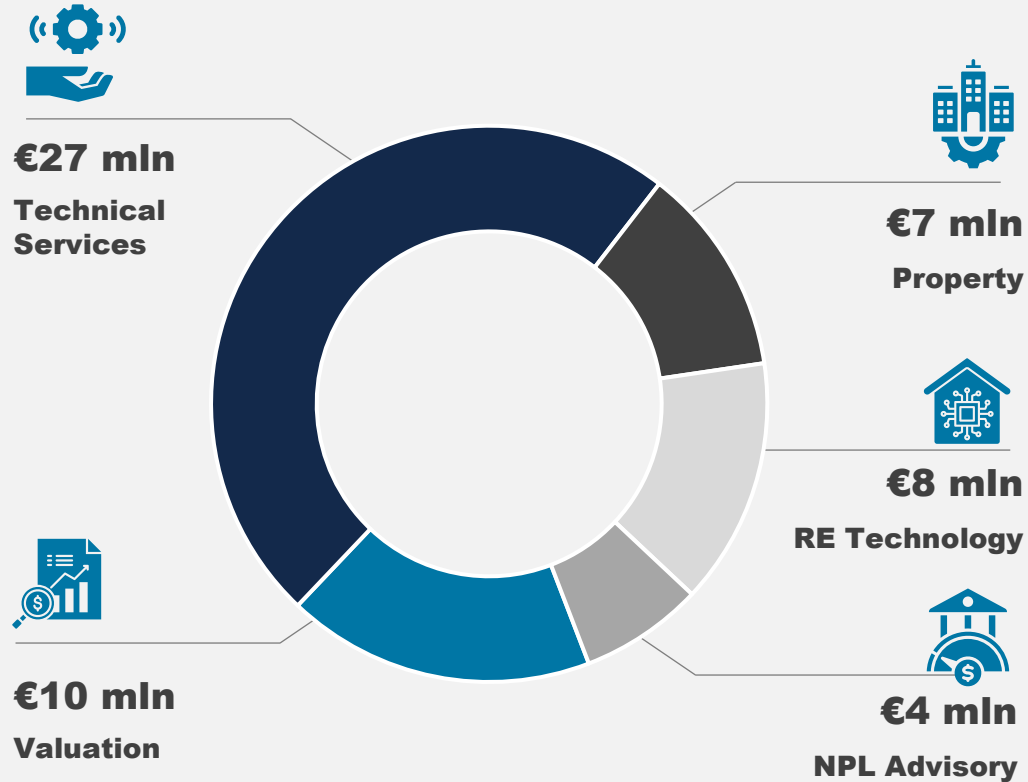


+4.500

Liquidation operations

Highlights 2023

RINA Prime Value Services offers truly comprehensive range of services in the Real Estate sector, from valuation to advisory, technical services to energy transition, ESG to proptech, and real estate and NPE asset management.



Consolidated data with companies controlled by RINA Prime Value Services (Prime Green Solutions, RINA Prime Property, IdeaRE, NPLs RE_Solutions, RE_Solutions Agency, QBT, RINA Prime International LTD, Polish Properties).



Turnover
€ 56mill

Our standards & certifications



RINA Prime Value Services is **ISO 9001:2015, ISO 45001:2018, ISO 14001:2015, ISO 30415:2021, UNI/PdR 125:2022, SA8000 and ISO 14064-1:2018** certified

RINA Prime Value Services is an authorized laboratory for conducting tests and inspections on existing constructions (Sector A Circular 633/STC).

Our values



INTEGRITY TRANSPARENCY RELIABILITY MULTIDISCIPLINARITY EXCELLENCE

Top client



Funds



Developers & investors



Corporate



Public authorities



Banks



**DISCOVER
OUR WEBSITE**



RINA Prime Value Services



@rinaprime

REV00 of 05.08.2024

Priming your future.